

# MAX solutions

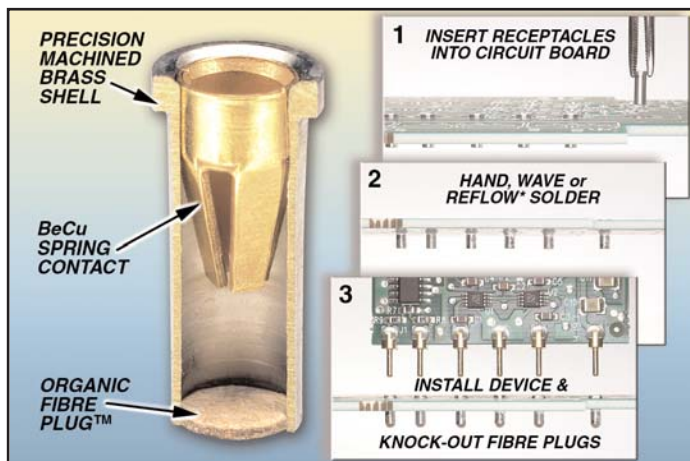
## MILL-MAX RECEPTACLES WITH *ORGANIC FIBRE PLUG™* SOLDER BARRIER

Mill-Max's knock-out-bottom receptacles are discrete sockets for soldering into printed circuit boards. Six sizes are now available:

Mill-Max Receptacle #	Incorporates Contact #	Range of Pin Acceptance	Recommended Mounting Hole
<b>5359</b>	10	Ø.012 - .017"	Ø.043 ±.003"
<b>4015</b>	30	Ø.015 - .025"	Ø.057 ±.003"
<b>4280</b>	16	Ø.022 - .034"	Ø.067 ±.003"
<b>0379</b>	34	Ø.077 ±.003"	
<b>9873</b>	02	Ø.040 - .050"	Ø.083 ±.003"
<b>5364</b>	23	Ø.045 - .065"	Ø.103 ±.003"



**#4015 & #9873**



**#0379**

### FEATURES:

- Designed for hand, wave or reflow\* soldering. The *ORGANIC FIBRE PLUG™* barrier prevents solder, paste or flux from contaminating the spring contact.
- After soldering, the *OFP™* barrier is knocked out of the receptacle when the device is plugged in.
- The thru-hole receptacle design permits the component lead to pass through and make connection with another circuit board.
- All Mill-Max receptacles use a precision machined brass housing with a press-fit beryllium copper "multi-finger" contact (heat-treated BeCu is the best electrical spring contact material).
- All parts are available as discrete receptacles; #4015, #4280, #5364 & #9873 can also be supplied on carrier tape per EIA-481 for industry standard pick and place machines.

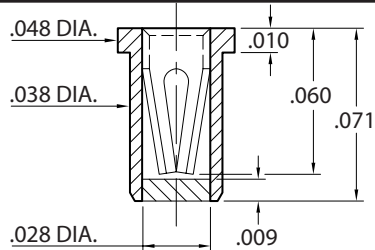
*\*Intrusive reflow (also called "pin-in-paste") is a technique of using conventional thru-hole components in a reflow soldering process. The receptacles are placed into plated-thru-holes in the circuit board (solder paste has previously been screen printed on pads adjacent to the holes) and the board is reflowed in the same pass as other SMT components. Solder will fill the plated-thru-holes and achieve solder joints as reliable as wave soldering. The *OFP™* barrier prevents solder paste from being picked-up inside the contact during pick 'n place assembly. "Overprinting" paste on the solder mask can be used to adjust the volume of paste required to fill each hole.*

(10/03-529, 535)

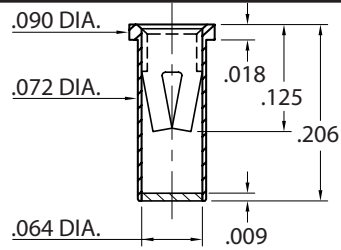
Mill-Max Mfg. Corp. • 190 Pine Hollow Road, Oyster Bay, NY 11771-0300  
 516-922-6000 • Fax: 516-922-9253  
 e-mail: [techserv@mill-max.com](mailto:techserv@mill-max.com) or  
[sales@mill-max.com](mailto:sales@mill-max.com)  
[www.mill-max.com](http://www.mill-max.com)



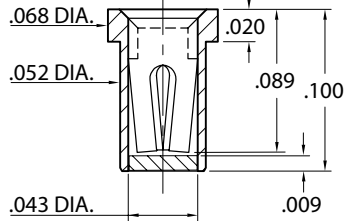
Maximum Interconnect Solutions



5359-0-43-XX-10-XX-10-0  
 With OFP™ solder barrier  
 Solder mount in .040 min.  
 mounting hole.

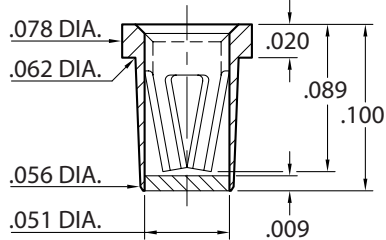


0379-0-43-XX-34-XX-10-0  
 With OFP™ solder barrier  
 Solder mount in .075 min.  
 mounting hole.



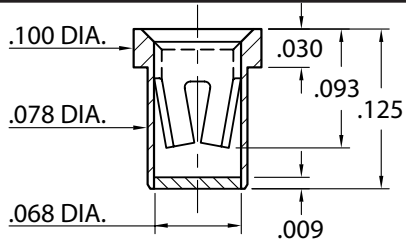
4015-0-43-XX-30-XX-10-0  
 With OFP™ solder barrier  
 Solder mount in .054 min.  
 mounting hole.

Also available on 8mm wide carrier tape,  
 5,500 parts per 13" reel.  
**Order as: S740-XX-001-00-150000**



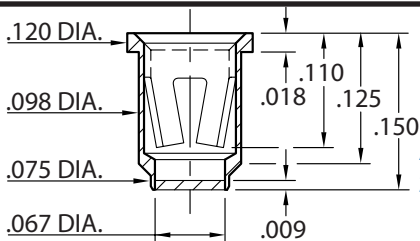
4280-0-43-XX-16-XX-10-0  
 With OFP™ solder barrier  
 Solder mount in .064 min.  
 mounting hole.

Also available on 8mm wide carrier tape,  
 5,500 parts per 13" reel.  
**Order as: S742-XX-001-00-800000**



9873-0-43-XX-02-XX-10-0  
 With OFP™ solder barrier  
 Solder mount in .080 min.  
 mounting hole.

Also available on 12mm wide carrier tape,  
 4,500 parts per 13" reel.  
**Order as: S798-XX-001-00-730000**



5364-0-43-XX-23-XX-10-0  
 With OFP™ solder barrier  
 Solder mount in .100 min.  
 mounting hole.

Also available on 12mm wide carrier tape,  
 2,000 parts per 13" reel.  
**Order as: S753-XX-001-00-640000**